



# TRUE LIGHT

Baptist Church

JULY 2009

## A MESSAGE FROM THE PASTOR

### WHERE IS YOUR TREASURE STORED: IN HEAVEN?

*“But store up for yourselves treasures in heaven, where moth and rust do not destroy, and where thieves do not break in and steal.” (Matthew 6:20 NIV)*



Earthly riches are perishable. When you invest in the world, no matter the abundance of your wealth, you cannot take that investment with you. However, investments in the things of the Kingdom of God, things we send on ahead will last.

**Store Up Treasures In Heaven.** “But store up for yourselves treasures in heaven, where moth and rust do not destroy, and where thieves do not break in and steal” (vs. 20). So often, we spend our whole lives pursuing things that will be of no value for eternity. The things that are of the most value to us here, the material things, will be of

the least value there. The world would tell us that the first characteristic of a successful person is financial prosperity or material possessions, but the Bible says that the first characteristic of a successful person is that they value and invest in those things that will last for eternity.

People think that success comes only by hard work, intelligence, and wise investing. However, “Nothing that is God’s is obtainable by money.” Jesus says that, unlike an earthly investment, your investment in heaven will not be subject to theft, decay, or destruction. The investment in heaven will pay eternal dividends, not only that, you can take your investment with you!

**How Do We Invest In Heaven?** We invest into heaven by first giving our lives to Jesus and the cause of Christ. Everything that we do reflects the investment we make. The manner in which

### INSIDE THIS ISSUE

CHILDREN’S CHURCH	3
YOUTH SPOTLIGHT	4
COMMUNITY AND FAMILY DAY!!!	5
BONNE’S KITCHEN CORNER	7

we live our lives is sort of like us sending up materials to heaven for our home to be built.

The law of the harvest (2 Corinthians 9:6; Luke 6:38) applies not only to earthly investments but to heavenly ones as well. To be focused on treasures in heaven is to pursue those goals and activities that have eternal significance and that have a relationship to God as the ultimate concern.

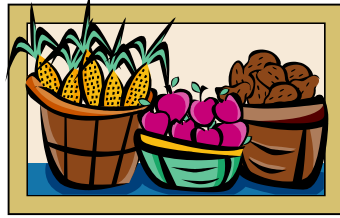
Being able to invest your life into the kingdom of God requires that you trust God enough to let go and let God. Proverbs 3:9-10 *"Honor the Lord from your wealth, And from the first of all your produce; so your barns will be filled with plenty, and your vats will overflow with new wine."* Do you trust in God enough to do this? Martin Luther astutely observed, "There are three conversions necessary: the conversion of the heart, mind and the purse." Of these three, it may well be that we moderns find the conversion of the purse the most difficult.

**The Second Test Of Where's Your Treasure.** In Matthew 6:19-24, Jesus gives us four tests to help us determine the accurate answer to this question of "where's your treasure?" His first test, is the Durability Test (Matthew 6:19-20). The Durability Test asks the question, "How long will it last?" If your treasure is on earth, it will not pass the durability test. That is why Jesus advises us to store up our treasure in heaven instead of on earth. Heaven is a much safer place to stockpile your wealth because in heaven there are



ever.

In verse 21, Jesus gives us a second test to see whether our treasure is on earth or in heaven. It's the Heart Test. Jesus says, "For



where your treasure is, there your heart will be also" (vs. 21). Please note that Jesus does not say that where you heart is, there you will place your treasure. Many people read it that way, but that's backwards. Jesus is saying that the location of our treasure indicates where our heart

already is. A lot of people think Jesus is saying that if your heart is right with God, if you are head-over-heels in love with God, if you feel overwhelmingly grateful for all that God has done for you, if you are a super-spiritual saint, then you will give your treasure to God, then you will tithe, then you will see your way clear to take \$5,000 out of your retirement account and generously give it to the building fund.

That's not what Jesus says at all. He says just the opposite. He says that wherever you put your treasure, there your heart will follow. Jesus says that your heart will follow your treasure. Wherever you put your treasure, there your heart will go. The way we use money (as evidenced by the thousands of transactions we make each year by check, cash, or credit cards) gives the best evidence for the things we value and cherish the most. Your heart follows your treasure, if your treasure is in the right place, you will place your heart there also.

If you choose to store up your treasure on earth, your heart will be focused on things of the earth, and you will love it here on earth so much that you will tend to drift away from God. However, if you choose to store up your treasure in heaven, then your heart will be more excited about heaven, and as a result, you will end up growing closer to God because you will be eager to see Him face to face. When you chose to invest your life in God's purposes, you will find that your heart will fall deeply in love with God. Your heart will become passionate and excited about what God is doing because you will know that you are already a part of it.



By the way, the same principle applies to your relationships. If you are a husband or wife

Do you understand how this works? Whatever you invest your time and money in will become very important to you. If you invest money into a sports car, you will keep it looking sweet. If you buy stock in Amazon.com, you will start watching how the company is doing. If you invest time and money in some rental property, you will make sure it is well maintained. If you sacrificially invest time and money in your marriage, you will be motivated to keep working on it until you successfully rekindle your first love. Although we may not realize it, that's why men buy flowers, candy, and sheer nighties—an attempt to rekindle their first love. If you are having trouble in your marriage begin to invest more in it, not just money, but time and energy as well.

The same thing works in your relationship with God. When you choose to heavily invest in God's purposes, you will find that your spiritual life is elevated to a higher level. When you recognize that your giving goes to support our missionaries in Zimbabwe or Malawi, you will more likely pray for that person every day. When you give money to build a gym, you will be thrilled when you hear reports of the people who met Christ there. Wherever you put your treasure, that is what you will be most interested in, for that is where your heart will be.

Jesus said that where our treasure is, there our heart will be also (Matt. 6:21). If our spending patterns, then, are an indicator of where our heart is hot and where it is not, at what level would giving to your church register compared to soft drinks? Against a Big Mac? Against your last entertainment: movie, video or CD purchase, or concert?

God's divine providence is the key to our success and wealth. In our quest to get all that this life has to offer we often take hold of the things of this world and forget the best, the one who has provided it all. Only a relationship with God will last. He is and remains the key to all of our abundant blessings in this life and in the life beyond.



## *True Light Baptist Church Children's Ministry*



Children's Church is where our elementary aged children build their worship foundations. This is where they focus on God in a personal way—and experience children's worship through uplifting songs and fun, and memorable Bible learning.

This summer we will be expanding our Children's Church in hopes of reaching more of our children who are first through fifth grade.

**Starting Sunday, July 5  
Children's Church will be  
available at 8:00 a.m.**

If your children are early risers,  
Children's Church at 8:00 a.m. each  
Sunday morning  
is a great place to be!

## *Deaconess Rhonda Truesdale: Youth Ministry Director*

**Church Activities:** Deaconess, Youth Director

**Husband:** Deacon Kris Truesdale

**Children:** Kobi and Kolin Truesdale

This month I have decided to feature our Youth Director. She is a wonderful woman of God and is often running around taking care of things behind the scenes. Rhonda works with the youth just about every Sunday and on Wednesday nights. I think it is time to bring this woman to the forefront. I invite you to get to know Deaconess Rhonda Truesdale.

**What do you enjoy most about True Light Baptist Church?** One of the things that I enjoy the most about True Light Baptist Church is that there is a ministry for every age group to learn about God's Word and apply it to our lives.

**How/Why did you decide to go into the Youth Ministry?** I decided to serve in the Youth Ministry, because I believe that it takes the church family, along with parents instilling the seeds of God's love and encouragement into young people's lives. Our young people receive a lot of discouragement and I wanted God to use me as a positive empowering vessel to encourage them, let them know that God created them for a purpose, and help them to study God's Word and apply it to their lives.

**What do you enjoy most about the young people?** The thing that I enjoy the most about the young people is their energy and building relationships with them. Our youth have a lot of gifts and talents.

**What is the most challenging aspect of working in the Youth Ministry?** The most challenging aspect of working in the youth ministry is noticing, identifying, and addressing each youth's personal challenges arming them with how God's Word can best be used in their current and future situations.

**What is the most rewarding aspect of working with the young people?** The most rewarding aspect of working with the young people is seeing them mature in their relationship with Christ.

**What are some of the challenges/issues that the youth are facing?** Being leaders among their peers, respecting one another and respecting adults, understanding the importance of obtaining an education, to not live in the stereotype of how the world perceives them to be, and low self-esteem.

**What should we do as adults to help our youth?** I would suggest, as adults, when we see them, try to hold a conversation with them. Let our youth know that True Light genuinely cares about our youth.

**What is your long-term vision for the Youth Ministry?** My long-term vision for the Youth Ministry is to training our young people in the work, worship, and witness of Christ, as well as providing them with life skills, so they can be what God has purposed them to be.

**Favorite Scripture and why?** One of my favorite scriptures comes from II Timothy 2:2 (NKJV), it states, *"The things that you have heard from me among many witnesses, commit these to faithful men who will be able to teach others also."* Paul had a vision for spreading the good news of Jesus throughout the world. He knew he could not accomplish this task alone, so he inspired and trained others to carry on the work. I see myself as a runner who is apart of a track team for Christ and I want to pass on the wisdom that I received from my mentors to the next generation. I have a passion for working with and teaching young people.

**Why is it important for youth to have a Christian foundation?** It is important for youth to have a Christian foundation, because Jesus' foundation is of eternal life, forgiveness, love, and guidance. This foundation helps young people to keep climbing through every situation.



# Community and Family Day

Sunday July 26, 2009

8:00 a.m. and 11:00 a.m. Worship Services

9:30 a.m. Sunday School

The Great Commission tells us, "*Go, therefore, and make disciples of all nations, baptizing them in the name of the Father and of the Son and of the Holy Spirit, teaching them to observe everything I have commanded you*" (Matthew 28:19-20)

*Fellowship*  
*Community Leaders*



*Worship*  
*Family*  
*Friends*

*As Christians, we desire to live a balanced life*

- √ Connect with God and others
- √ Grow through the study of God's Word
  - √ Serve through the Church
- √ *Go into your world sharing the Gospel*

We are asking all of our members to invite someone from the community as well as your loved ones to come, worship and fellowship with us.

# ANGELS OF HEALTH AND HEALING

## IMPROVING EMOTIONAL HEALTH

People who are emotionally healthy are in control of their emotions and their behavior. They are able to handle life's inevitable challenges, build strong relationships, and lead productive, fulfilling lives. When bad things happen, they're able to bounce back and move on.

Unfortunately, too many people take their mental and emotional health for granted – focusing on it only when they develop problems. But just as it requires effort to build or maintain physical health, so it is with mental and emotional health. The more time and energy you invest in your emotional health, the stronger it will be. The good news is that there are many things you can do to boost your mood, build resilience, and get more enjoyment out of life.

### **People who are mentally and emotionally healthy have:**

- A sense of contentment.
- A zest for living and the ability to laugh and have fun.
- The ability to deal with stress and bounce back from adversity.
- A sense of meaning and purpose, in both their activities and their relationships.
- The flexibility to learn new things and adapt to change.
- A balance between work and play, rest and activity, etc.
- The ability to build and maintain fulfilling relationships.
- Self-confidence and high self-esteem.



These positive characteristics of mental and emotional health allow you to participate in life to the fullest extent possible through productive, meaningful activities and strong relationships. These positive characteristics also help you cope when faced with life's challenges and stresses.

### **Building your resilience**

Resilience involves maintaining flexibility and balance in your life as you deal with stressful circumstances and traumatic events. This happens in several ways, including:

- Letting yourself experience strong emotions, and also realizing when you may need to avoid experiencing them at times in order to continue functioning
- Stepping forward and taking action to deal with your problems and meet the demands of daily living, and also stepping back to rest and reenergize yourself
- Spending time with loved ones to gain support and encouragement, and also nurturing yourself
- Relying on others, and also relying on yourself

### **Physical health is connected to mental and emotional health**

- Get enough rest.
- Learn about good nutrition and practice it.
- Exercise to relieve stress and lift your mood.
- Get a dose of sunlight every day.
- Limit alcohol and avoid cigarettes and other drugs.

Information: [HELPGUIDE.org](http://HELPGUIDE.org)  
BonneTootle

## Things to Remember in July

- ⇒ Wednesday's from 1:00 p.m. to 2:00 p.m. the Health Ministry has a low impact exercise program. Our instructors are **trained and certified**. Come out and join the men and women who are already benefiting from this program.
- ⇒ Weight Watchers is here at True Light every Thursday evening from 5:00 to 7:00 p.m.
- ⇒ Healthy Lifestyle Changes is here at True Light on first and third Mondays at 6:30 p.m.



## BONNE'S KITCHEN CORNER

### LIGHT SPINACH, TOMATO AND ORANGE SALAD

3 1/2 lb. or 6 cups baby spinach leaves  
 4 plum tomatoes  
 2 large oranges  
 1 tablespoon rice vinegar  
 2 teaspoons crumbled dried thyme  
 Salt and Pepper to taste  
 2 tablespoons extra virgin olive oil

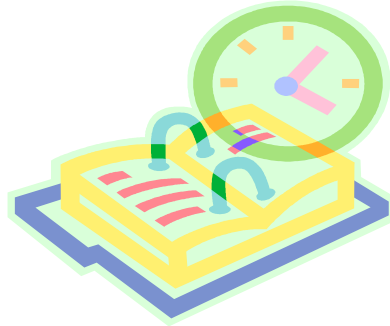
#### Preparation:

Wash and spin dry the spinach. Place the spinach in a large bowl. Cut the tomatoes into small wedges, and add to the spinach. Peel one orange and cut into small thin wedges, reserving the juice. Juice the second orange and add it to the reserved juice. Add the orange wedges to the spinach mixture and toss. Mix together the orange juice, rice vinegar, thyme, and salt and pepper to taste. Whisk in the oil and mix until incorporated. Toss the dressing with the spinach mixture. Serve immediately.

Preparation Time: 10 minutes



## Church Calendar Highlights



### KEEP CONNECTED!

Active members of True Light who are sick, shut-in, elderly, or others who are physically unable to attend church may request a CD or DVD of the Pastor's sermons. Please contact a member of your Family Ministry Team or the office for further details.



#### July 2009

July 3 (Fri)	<b>Office Closed</b> —Independence Day Observance
July 9-11	Droppin' The L Youth Conference
July 11 (Sat)	Ministry Leaders Meeting Bonfils Blood Drive
July 13 (Mon)	Weight Loss Intensive
July 18 (Sat)	Youth Water World Outing Usher Training Seminar EMAM
July 19 (Sun)	Youth Sunday
July 26 (Sun)	Community and Family Day



#### August 2009

Aug 1 (Sat)	Prayer at Montbello High School
Aug 9 (Sun)	<b>Church Picnic at Heritage Square</b>
Aug 16 (Sun)	Youth Fashion Show
Aug 22 (Sat)	Youth In House Conference

## After Hours Prayer Line

*"Again, I tell you that if two of you on earth agree about anything you ask for, it will be done for you by my Father in heaven. For where two or three come together in my name, there am I with them."*

Matthew 18:19-20 (NIV)

## **After Hours Prayer Line Phone Number** **(303) 375-0754 Ext: 9**

- ◆ Call for prayer and leave a recorded message. Our Intercessory Prayer Team regularly monitors this line.
- ◆ If you leave contact information, a member of the Intercessory Prayer Team will call and pray with you.
- ◆ Your Intercessory Prayer Team wants to pray with you and for you.



True Light Baptist Church  
14333 Bolling Drive  
P.O. Box 39003  
Denver, CO 80239

NONPROFIT ORG.  
U.S. POSTAGE  
PAID  
DENVER, CO  
PERMIT NO. 3331

ADDRESS SERVICE REQUESTED

IN GOD WE TRUST